

## Uni



Das ideale Sitzmöbel für jedes Ambiente, perfekt in Warte- und Durchgangsräumen. Uni nimmt den Besucher mit körpernahe, funktionalem Komfort auf. Das Kufengestell aus robustem Stahlrohr ergänzt die Armlehnen, abgestimmt auf Rückenlehne und Sitzfläche, beide gepolstert, erhältlich in diversen Ausführungen aus Stoff und Leder. Die Kollektion wird in zwei Varianten angeboten, mit mittelhoher oder hoher Rückenlehne.

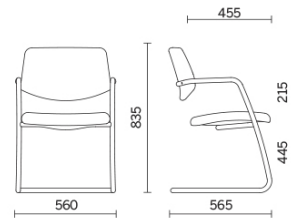
### Storie collegate

**MSP Bank**, Mosca, Russland (2011)

**RIA Novosti**, Mosca, Russland (2012)

**Vittoria Assicurazioni**, Catania, Italien (2019)

## Freischwinger mittelhohe Rückenlehne

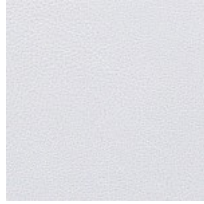


## Materiali e rivestimenti

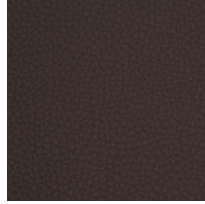
### Bezug



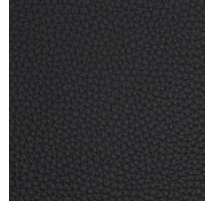
Beschichteter Stoff NX  
Colori disponibili: 11



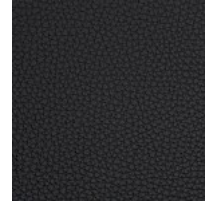
Beschichteter Stoff SC -  
Secret / Flukso  
Colori disponibili: 10



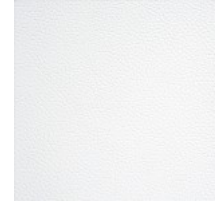
Beschichteter Stoff NX  
Colori disponibili: 1



Leder SX + Skai NX  
Colori disponibili: 12



Leder SX - Box Land /  
Dani  
Colori disponibili: 12



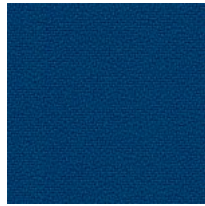
Leder PA - Panama /  
Dani  
Colori disponibili: 10



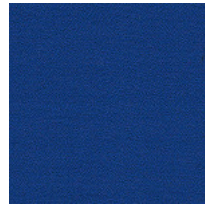
Leder TS - Florida / Dani  
Colori disponibili: 10



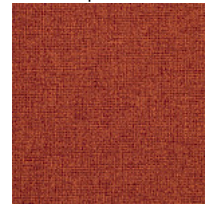
Stoff AL - Alba / FiDiVi  
Colori disponibili: 10



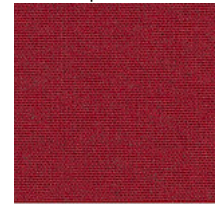
Stoff BN - Bondai /  
FiDiVi  
Colori disponibili: 10



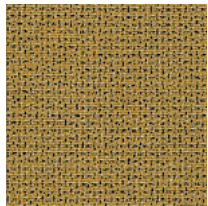
Stoff AB - Xtreme Plus /  
Camira  
Colori disponibili: 10



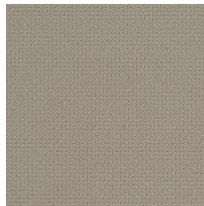
Stoff ME - Medley /  
Gabriel  
Colori disponibili: 15



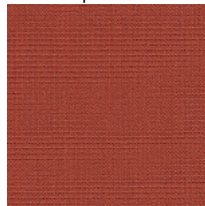
Stoff MF - Main Line  
Flax / Camira  
Colori disponibili: 10



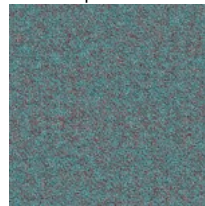
Stoff MW - Main Line  
Twist / Camira  
Colori disponibili: 7



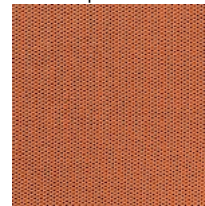
Stoff ST - Step / Gabriel  
Colori disponibili: 10



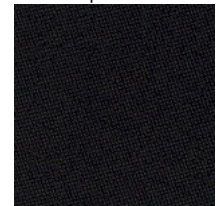
Stoff CS - Crisp / Gabriel  
Colori disponibili: 10



Stoff SY - Sinergy /  
Camira  
Colori disponibili: 10



Stoff WI - Wilson /  
Vescom  
Colori disponibili: 10



Stoff CH - Chili / Gabriel  
Colori disponibili: 10

**Questo prodotto è garantito 5 anni.** Sitland Spa si riserva di apportare modifiche e/o migliorie di carattere tecnico ed estetico ai propri modelli e prodotti in qualsiasi momento e senza preavviso. Le foto e i colori visualizzati sono puramente indicativi e possono variare rispetto alla realtà. Per maggiori informazioni si prega di contattare il nostro Servizio Clienti [service@sitland.com](mailto:service@sitland.com)