

sitland

---

# Bomm



## Projects

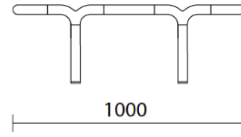
**Your Workspace Showroom**, Clerkenwell, United Kingdom (2023)

**La Boutique du Centre Pompidou**, Paris, France (2023)

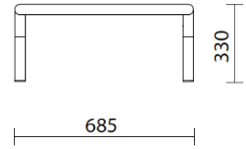
## Armchair



FRONT

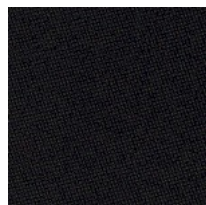


SIDE

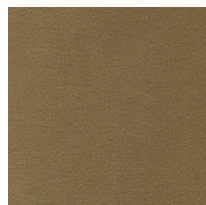


## Materials and colours

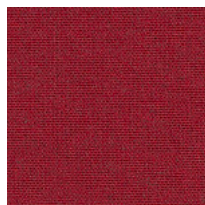
### Upholsteries



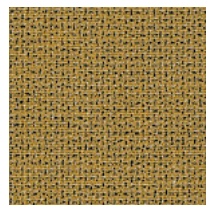
Fabric CH - Chili / Gabriel  
Available colours 10



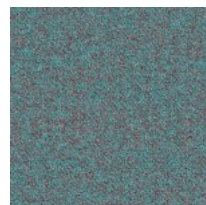
Fabric RG - Regent / Camira  
Available colours 10



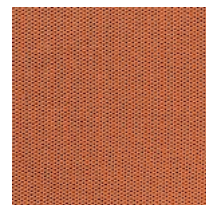
Fabric MF - Main Line Flax / Camira  
Available colours 10



Fabric MW - Main Line Twist / Camira  
Available colours 7



Fabric SY - Sinergy / Camira  
Available colours 10



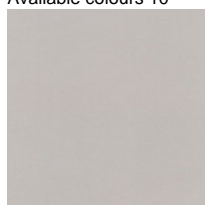
Fabric WI - Wilson / Vescom  
Available colours 10



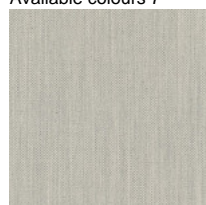
Fabric FT - Foster / Vescom  
Available colours 7



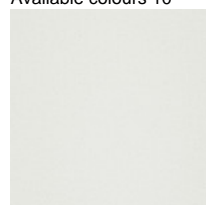
Fabric RW - Re-wool / Kvadrat  
Available colours 4



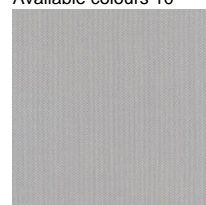
Fabric HE - Hero 2 / Kvadrat  
Available colours 6



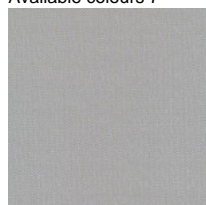
Fabric FD - Fjord 2 / Kvadrat  
Available colours 7



Fabric S1 - Steelcut 3 / Kvadrat  
Available colours 13



Fabric SE - Steelcut Trio 3 / Kvadrat  
Available colours 15



Fabric S4 - Steelcut Quartet / Kvadrat  
Available colours 5

**Questo prodotto è garantito 5 anni.** Sitland Spa si riserva di apportare modifiche e/o migliorie di carattere tecnico ed estetico ai propri modelli e prodotti in qualsiasi momento e senza preavviso. Le foto e i colori visualizzati sono puramente indicativi e possono variare rispetto alla realtà. Per maggiori informazioni si prega di contattare il nostro Servizio Clienti [service@sitland.com](mailto:service@sitland.com)