

## Canapé



Canapé is the collection of two and three-seater sofas and armchairs with a controlled and distinctive shape, combined with excellent comfort which can be used in every type of environment. The padding in CFC-free and high-density polyurethane foam of the back and the deep seat ensures compactness and shape retention of the volumes, while the inner structure made in wood throughout guarantees strength and solidity. The GL model is enriched with artisan stitching with a square pattern.

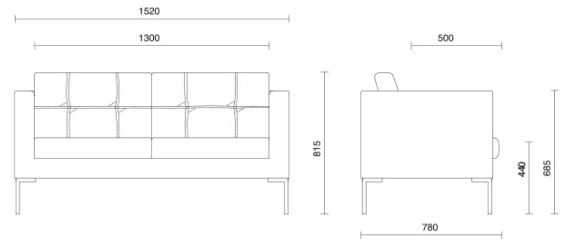
### Projects

**Saint Vincent's Hospital**, Dublino, Ireland (2015)

**Exiger**, Bucharest, Romania (2019)

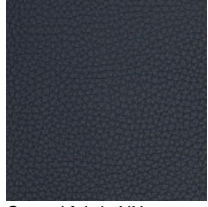
**UMMC Health**, Ekaterinburg, Russia (2019)

## Canapé GL 2 seater

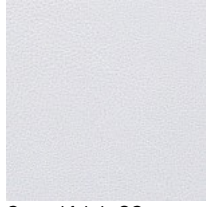


## Materials and colours

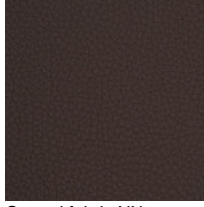
### Upholstery



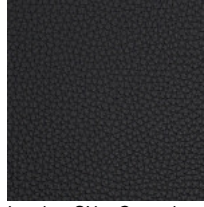
Coated fabric NX  
Available colours 11



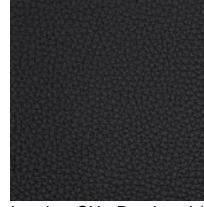
Coated fabric SC -  
Secret / Flukso  
Available colours 10



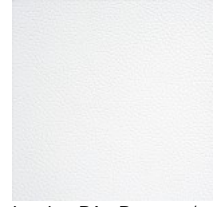
Coated fabric NX  
Available colours 1



Leather SX + Coated  
fabric NX  
Available colours 12



Leather SX - Box Land /  
Dani  
Available colours 12



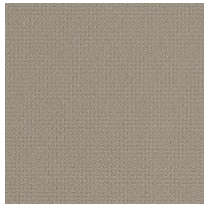
Leather PA - Panama /  
Dani  
Available colours 10



Leather TS - Florida /  
Dani  
Available colours 10



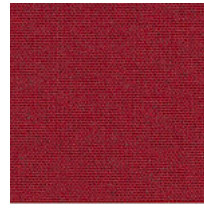
Fabric AB - Xtreme Plus  
/ Camira  
Available colours 10



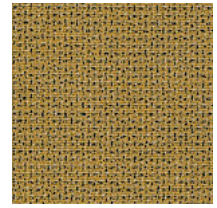
Fabric ST - Step /  
Gabriel  
Available colours 10



Fabric RG - Regent /  
Camira  
Available colours 10



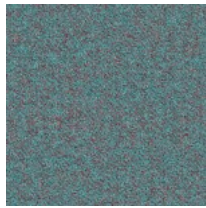
Fabric MF - Main Line  
Flax / Camira  
Available colours 10



Fabric MW - Main Line  
Twist / Camira  
Available colours 7



Fabric CS - Crisp /  
Gabriel  
Available colours 10



Fabric SY - Sinergy /  
Camira  
Available colours 10



Fabric RM - Remix 3 /  
Kvadrat  
Available colours 10



Fabric HE - Hero 2 /  
Kvadrat  
Available colours 6



Fabric FD - Fiord 2 /  
Kvadrat  
Available colours 7



Fabric S1 - Steelcut 3 /  
Kvadrat  
Available colours 13

**Questo prodotto è garantito 5 anni.** Sitland Spa si riserva di apportare modifiche e/o migliorie di carattere tecnico ed estetico ai propri modelli e prodotti in qualsiasi momento e senza preavviso. Le foto e i colori visualizzati sono puramente indicativi e possono variare rispetto alla realtà. Per maggiori informazioni si prega di contattare il nostro Servizio Clienti [service@sitland.com](mailto:service@sitland.com)