

## Dapper

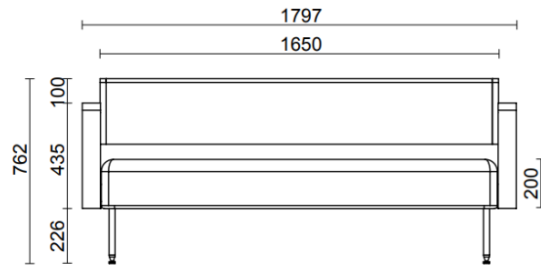


The Dapper sofa embodies the 50s charm of geometric yet comfortable shapes, a sense of proportion, and the lightness conveyed by being raised off the ground on slender, tapered legs — a clear sign that no detail has been left to chance.

The seat, armrests, and backrest are visibly distinct elements that together create a seating experience with perfect proportions, welcoming and evocative of classic Design heritage.

The soft cushion rests on a tubular steel frame and is visually connected by a fabric band that allows the seat to elegantly embrace the structure.

## Dapper three-seater



## Materials and colours

### Upholstery



Fabric AL - Alba / FiDiVi  
Available colours 10



Fabric BN - Bondai /  
FiDiVi  
Available colours 10



Fabric ME - Medley /  
Gabriel  
Available colours 15



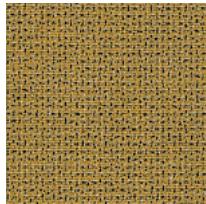
Fabric AB - Xtreme Plus  
/ Camira  
Available colours 10



Fabric CH - Chili /  
Gabriel  
Available colours 10



Fabric MF - Main Line  
Flax / Camira  
Available colours 10



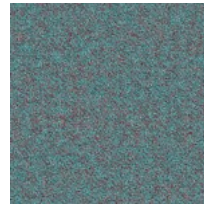
Fabric MW - Main Line  
Twist / Camira  
Available colours 7



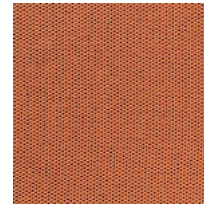
Fabric ST - Step /  
Gabriel  
Available colours 10



Fabric CS - Crisp /  
Gabriel  
Available colours 10



Fabric SY - Sinergy /  
Camira  
Available colours 10



Fabric WI - Wilson /  
Vescom  
Available colours 10



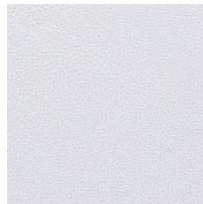
Fabric YO - Yoredale /  
Camira  
Available colours 10



Fabric FT - Foster /  
Vescom  
Available colours 7



Fabric RM - Remix 3 /  
Kvadrat  
Available colours 10



Coated fabric SC -  
Secret / Flukso  
Available colours 10

**Questo prodotto è garantito 5 anni.** Sitland si riserva di apportare modifiche e/o migliorie di carattere tecnico ed estetico ai propri modelli e prodotti in qualsiasi momento e senza preavviso. Le foto e i colori visualizzati sono puramente indicativi e possono variare rispetto alla realtà. Per maggiori informazioni si prega di contattare il nostro Servizio Clienti [service@sitland.com](mailto:service@sitland.com)