

Vega Hit



The Vega collection, designed by Sergio Bellin, offers a host of variants to accommodate all requirements. Whether minimalist and elegant or distinguished by special stitching, packed with a distinctive personality. Its design is informal yet at the same time sophisticated. The seat is equipped with an all-steel internal frame, covered with shape-retaining flexible polyurethane, with elastic belts ensuring superior comfort. The structure can be customised with semi-matt black or chrome finish.

Projects

Groupe PSA, Ta'Xbiex, Malta (2019)

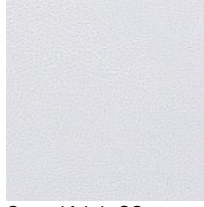
Models

Materials and colours

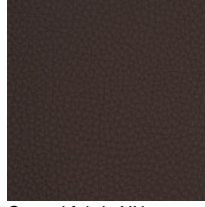
Upholstery



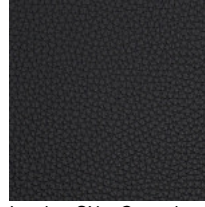
Coated fabric NX
Available colours 11



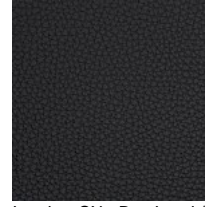
Coated fabric SC -
Secret / Flukso
Available colours 10



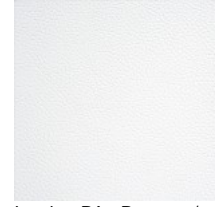
Coated fabric NX
Available colours 1



Leather SX + Coated
fabric NX
Available colours 12



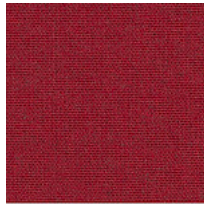
Leather SX - Box Land /
Dani
Available colours 12



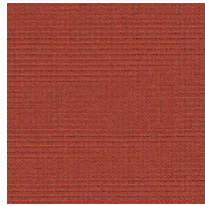
Leather PA - Panama /
Dani
Available colours 10



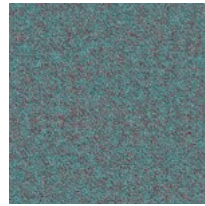
Leather TS - Florida /
Dani
Available colours 10



Fabric MF - Main Line
Flax / Camira
Available colours 10



Fabric CS - Crisp /
Gabriel
Available colours 10



Fabric SY - Sinergy /
Camira
Available colours 10



Fabric RM - Remix 3 /
Kvadrat
Available colours 10

Questo prodotto è garantito 5 anni. Sitland Spa si riserva di apportare modifiche e/o migliorie di carattere tecnico ed estetico ai propri modelli e prodotti in qualsiasi momento e senza preavviso. Le foto e i colori visualizzati sono puramente indicativi e possono variare rispetto alla realtà. Per maggiori informazioni si prega di contattare il nostro Servizio Clienti service@sitland.com