

## Vega Hit

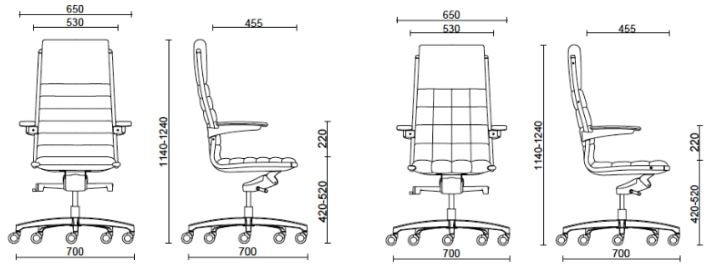


The Vega collection, designed by Sergio Bellin, offers a host of variants to accommodate all requirements. Whether minimalist and elegant or distinguished by special stitching, packed with a distinctive personality. Its design is informal yet at the same time sophisticated. The seat is equipped with an all-steel internal frame, covered with shape-retaining flexible polyurethane, with elastic belts ensuring superior comfort. The structure can be customised with semi-matt black or chrome finish.

### Projects

**Groupe PSA, Ta'Xbiex, Malta (2019)**

## Vega Hit Executive

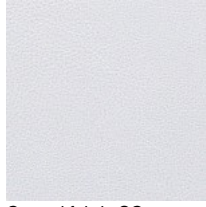


## Materials and colours

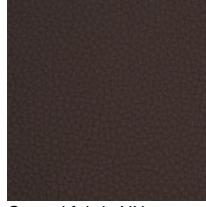
### Upholstery



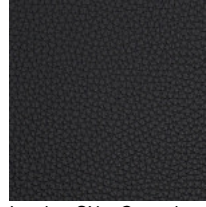
Coated fabric NX  
Available colours 11



Coated fabric SC -  
Secret / Flukso  
Available colours 10



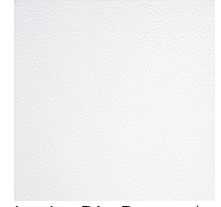
Coated fabric NX  
Available colours 1



Leather SX + Coated  
fabric NX  
Available colours 12



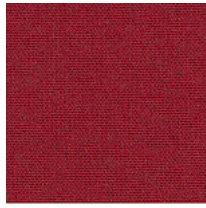
Leather SX - Box Land /  
Dani  
Available colours 12



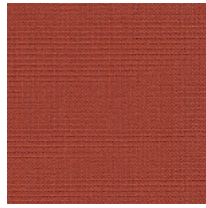
Leather PA - Panama /  
Dani  
Available colours 10



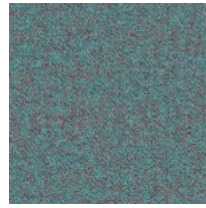
Leather TS - Florida /  
Dani  
Available colours 10



Fabric MF - Main Line  
Flax / Camira  
Available colours 10



Fabric CS - Crisp /  
Gabriel  
Available colours 10



Fabric SY - Sinergy /  
Camira  
Available colours 10



Fabric RM - Remix 3 /  
Kvadrat  
Available colours 10

**Questo prodotto è garantito 5 anni.** Sitland si riserva di apportare modifiche e/o migliorie di carattere tecnico ed estetico ai propri modelli e prodotti in qualsiasi momento e senza preavviso. Le foto e i colori visualizzati sono puramente indicativi e possono variare rispetto alla realtà. Per maggiori informazioni si prega di contattare il nostro Servizio Clienti [service@sitland.com](mailto:service@sitland.com)