

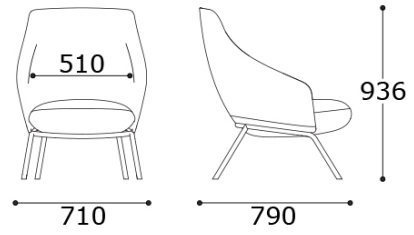
Montecarlo

Soft, curvaceous, enveloping. Montecarlo takes inspiration from the automotive world. Each element is defined by handcrafted stitching that creates elegant curves and evokes the most famous racing circuits. A new classic with cosy shapes: Montecarlo is the solution for every space, from the living room to the bedroom; also ideal for a relaxing space in community contexts.

Classy details define Montecarlo. With fabric or leather upholstery, it is characterised by a tone-on-tone or contrasting narrow band of stitching along the edge of the seat to highlight its sinuous lines. The hand-stitching defines its silhouette and adds personality to the high back version with headrest.

Montecarlo is a versatile seating system made up of a high back lounge chair, a medium back lounge chair and a classic upholstered dining chair. The light frame of the 4-leg base is made of black or white painted tubular metal. The frame supports the inviting seat made of flexible CFC/HCFC-free polyurethane to guarantee comfort and wellbeing. In the lounge versions, the foam seat is integrated with the armrests.

Fauteuil à dossier bas



Materiali e rivestimenti

Revêtement



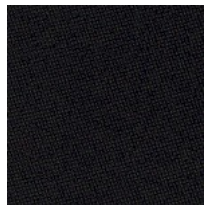
Tissu ME - Medley / Gabriel
Colori disponibili: 15



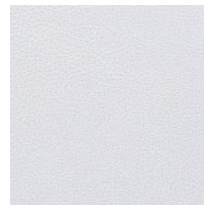
Tissu CS - Crisp / Gabriel
Colori disponibili: 10



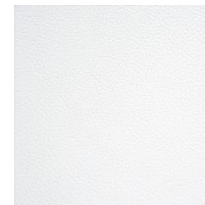
Tissu YO - Yoredale / Camira
Colori disponibili: 10



Tissu CH - Chili / Gabriel
Colori disponibili: 10



Tissu enduit SC - Secret / Flukso
Colori disponibili: 10



Cuir PA - Panama / Dani
Colori disponibili: 10



Cuir TS - Florida / Dani
Colori disponibili: 10

Questo prodotto è garantito 5 anni. Sitland Spa si riserva di apportare modifiche e/o migliorie di carattere tecnico ed estetico ai propri modelli e prodotti in qualsiasi momento e senza preavviso. Le foto e i colori visualizzati sono puramente indicativi e possono variare rispetto alla realtà. Per maggiori informazioni si prega di contattare il nostro Servizio Clienti service@sitland.com