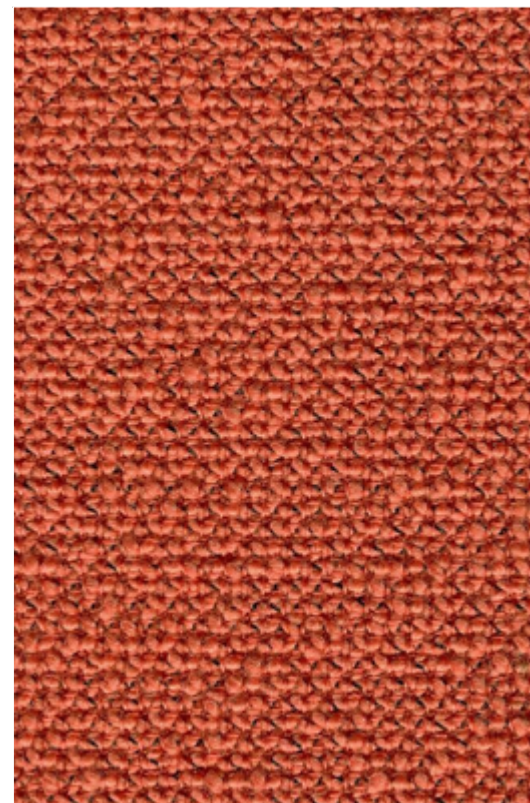


YO
Camira, Yoredale

Cat. 9

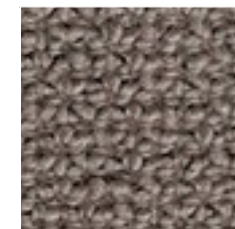
95% W, 3% PL, 2% PA
50.000 Martindale



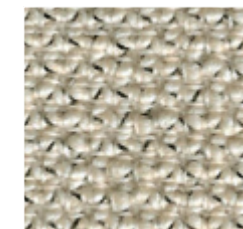
YO18_Yoredale UDA03



YO01_Yoredale UDA25



YO13_Yoredale UDA36



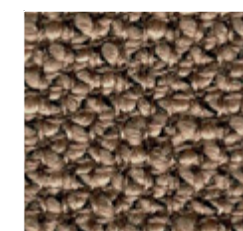
YO14_Yoredale UDA29



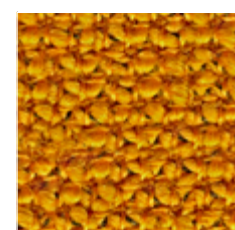
YO09_Yoredale UDA17



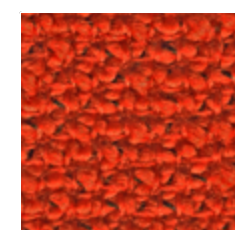
YO15_Yoredale UDA32



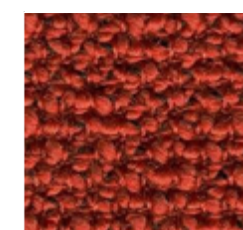
YO16_Yoredale UDA07



YO08_Yoredale UDA16



YO06_Yoredale UDA12



YO17_Yoredale UDA13

	Composizione	Composition
PA	Poliammidica	Polyamide
PL	Poliestere	Polyester
PL Fr	Poliestere ignifugo	Flame retardant polyester
Tr Cs	Trevira CS	Trevira CS
W	Lana	Wool
WV	Lana Vergine	Virgin Wool

	Caratteristiche	Features
	Ignifugo	Flame retardant
	Riciclabile	Recyclable
	Riciclato	Recycled

	Certificazioni	Certifications
	Non contiene metalli pesanti	No heavy metals

EU Ecolabel è un marchio europeo che certifica il ridotto impatto ambientale del prodotto

L'etichetta Oeko-Tex® STANDARD 100 garantisce che si può essere certi che ogni componente di questo articolo è stato testato per le sostanze nocive e che l'articolo è quindi innocuo in termini ecologici umani

Fibra di poliestere modificata "Flame Retardant permanente": capace di conservare con l'invecchiamento, l'usura e i lavaggi le proprietà ignifughe della fibra. I tessuti realizzati con fibra Trevira CS superano in tutto il mondo i più severi test di reazione al fuoco raggiungendo ovunque la miglior classificazione (Classe 1 in Italia)

The Oeko-Tex® STANDARD 100 label guarantees that every component of the article, has been tested for harmful substances and that the article therefore is harmless in human ecological terms

Sitland spa
Via Cà Silvestre 52
36024 Nanto, Vicenza - I
t +39 0444 637 100
f +39 0444 638 407
info@sitland.com
www.sitland.com

Follow us on

Note sui rivestimenti — Per ragioni tecniche non è possibile garantire lo stesso tono di colore tra un lotto di produzione ed un altro. Leggere differenze, con una tolleranza del ±5% devono intendersi come normali e non possono dar adito a reclami o alla risoluzione del contratto. Sitland spa si riserva il diritto di apportare modifiche alle finiture contenute nella presente cartella senza preavviso alcuno. Ulteriori informazioni sulle caratteristiche tecniche di ogni singolo rivestimento sono disponibili nel sito www.sitland.com

Pulizia e manutenzione — Per la manutenzione dei tessuti consigliamo di passare con frequenza almeno mensile la superficie, utilizzando un aspirapolvere. In caso di unto, utilizzare solamente un panno leggermente umido e sapone neutro, non strofinare e lasciare asciugare naturalmente.

Note on upholstery — For technical reasons, batch to batch variations in shade may occur. Slight differences, within a tolerance of ±5%, are to be considered as normal and acceptable and they cannot give rise to claims or to a breach of contract. Sitland spa reserves the right to make modifications to the finishes contained in the present folder without any prior communication. Further information on the technical characteristics of each individual upholstery is available on the website www.sitland.com

Cleaning and maintenance — For the fabrics maintenance, we suggest you to regularly vacuum clean. Stains can be cleaned with a soft damp cloth and mild soap; do not rub and allow to dry naturally.

Tessuti / Fabrics / Gewebe / Tissus / Tejidos

Tessuti / Fabrics / Gewebe / Tissus / Tejidos

CARTI12023

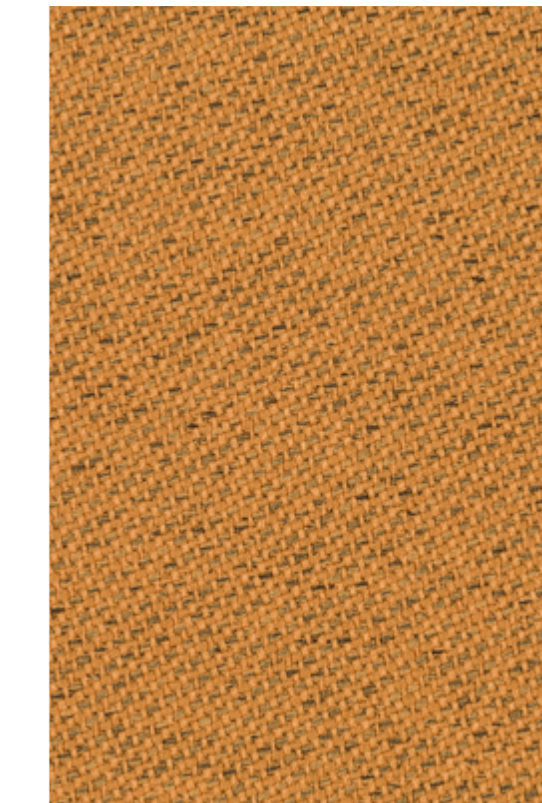
sitland

sitland

CH
Gabriel, Chili

Cat. 3

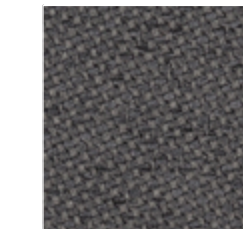
Designer Inger Mosholt Nielsen
100% post-consumer recycled PL Fr
60.000 Martindale



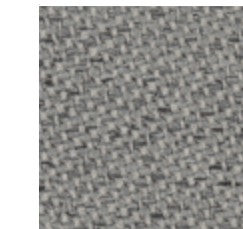
CH38_Chili 61173



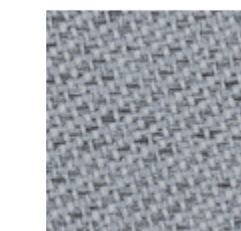
CH13_Chili 60999



CH14_Chili 61171



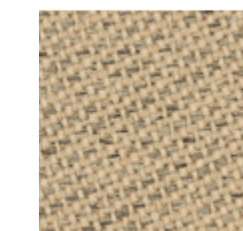
CH35_Chili 60116



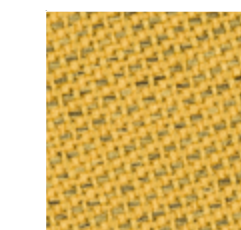
CH37_Chili 60117



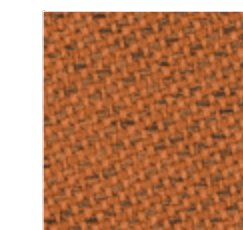
CH15_Chili 61174



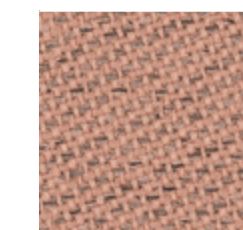
CH16_Chili 61172



CH25_Chili 62086



CH23_Chili 63099



CH22_Chili 63092

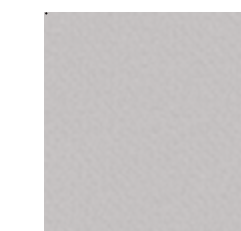
RG
Camira, Regent

Cat. 4

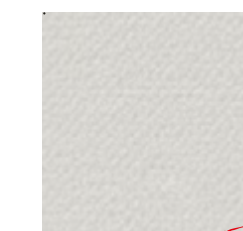
100% PL Fr
50.000 Martindale



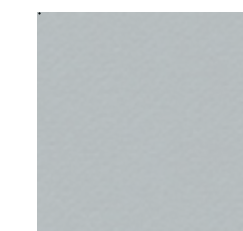
RG19_Regent REG19



RG26_Regent REG26



RG23_Regent REG23



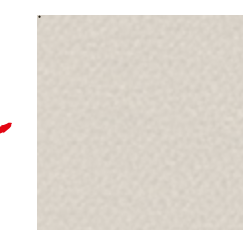
RG22_Regent REG22



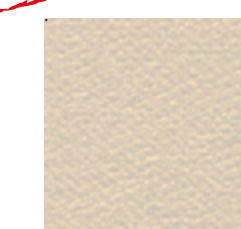
RG25_Regent REG25



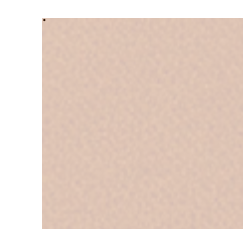
RG15_Regent REG15



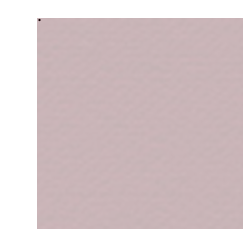
RG11_Regent REG11



RG10_Regent REG10



RG07_Regent REG07



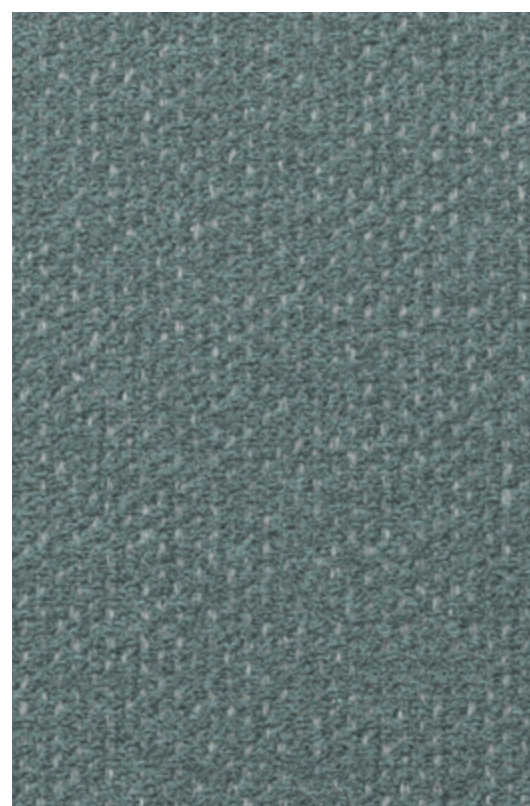
RG05_Regent REG05

PHASE OUT

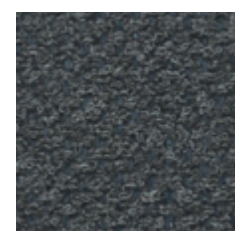
FT
Vescom, Foster

Cat. 9

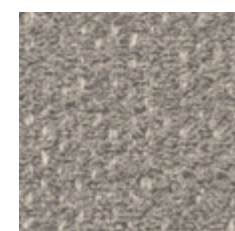
97% recycled polyester
FR / 3% polyester FR
60.000 Martindale



FT17_Foster 7072.17



FT14_Foster 7072.14



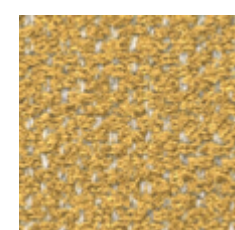
FT09_Foster 7072.09



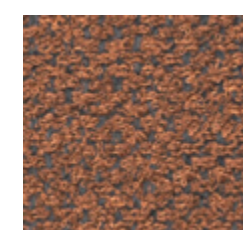
FT13_Foster 7072.13



FT02_Foster 7072.02



FT01_Foster 7072.01

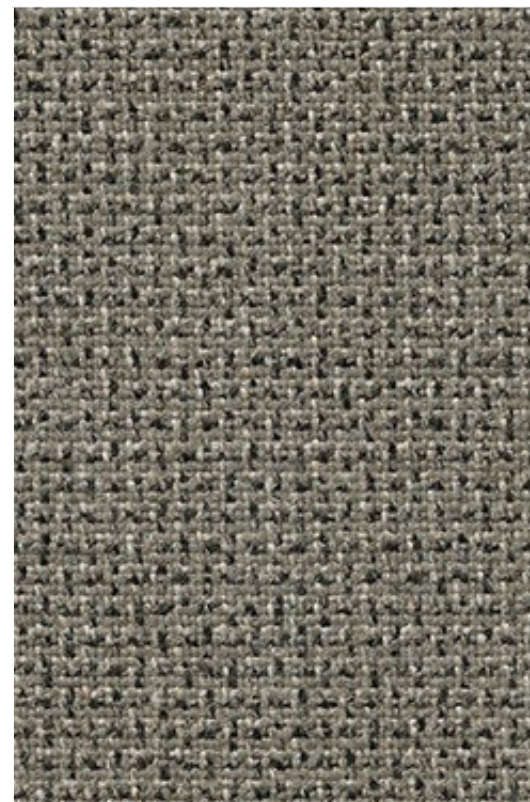


FT12_Foster 7072.12

MW/MF
Camira, Main Line Twist/Main Line Flax

Cat. 4

75% Virgin Wool, 25% Flax
50.000 Martindale



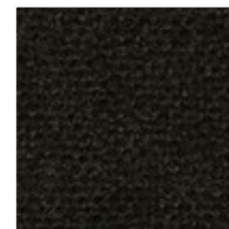
MW12_Main Line Twist MLT12



MF61_Main Line Flax MLF61



MF26_Main Line Flax MLF26



MF28_Main Line Flax MLF28



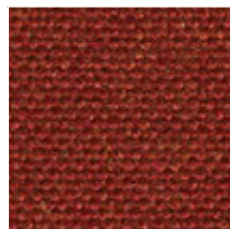
MF66_Main Line Flax MLF66



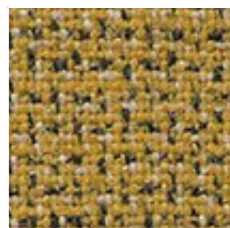
MW14_Main Line Twist MLT14



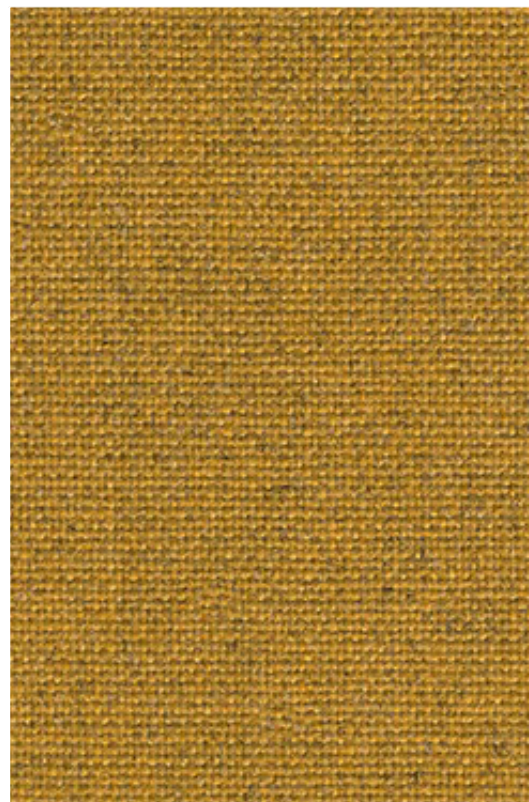
MW02_Main Line Twist MLT02



MF45_Main Line Flax MLF45



MW01_Main Line Twist MLT01

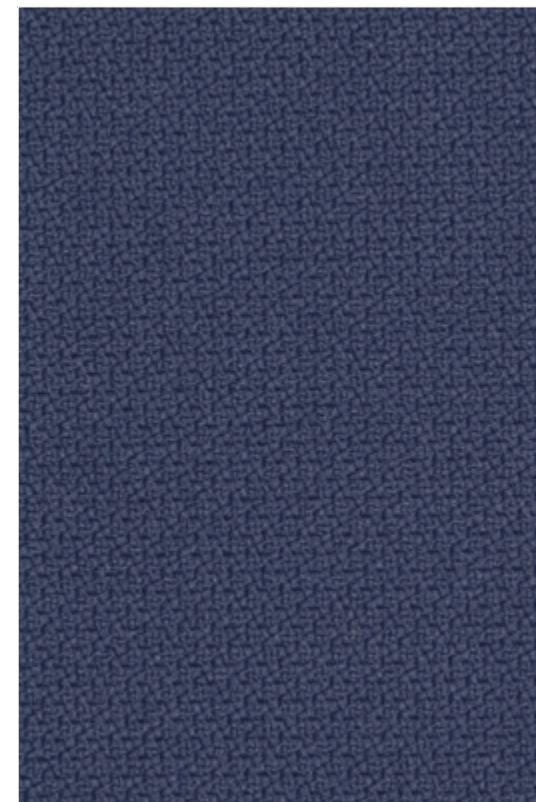


MF17_Main Line Flax MLF17

ST
Gabriel, Step

Cat. 5

Designer Inger Mosholt Nielsen
100% Trevira CS
100.000 Martindale



ST15_Step 66148



ST01_Step 60999



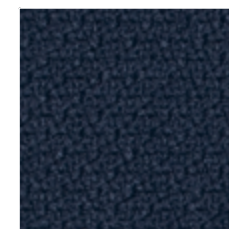
ST03_Step 60021



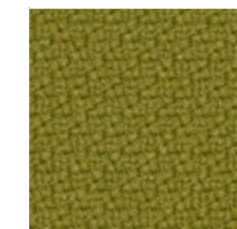
ST09_Step 60004



ST11_Step 61149



ST06_Step 65011



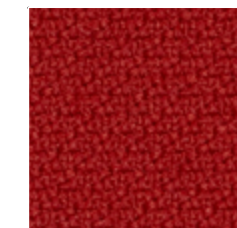
ST33_Step 68119



ST27_Step 68164



ST08_Step 62057



ST17_Step 63012

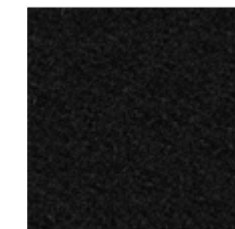
SY
Camira, Synergy

Cat. 5

95% WV, 5% PA
100.000 Martindale



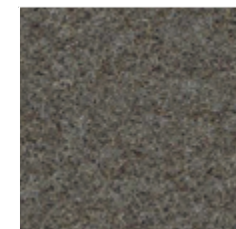
SY02_Synergy LDS08



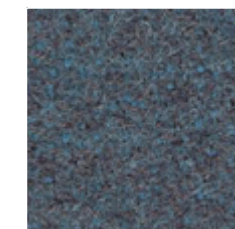
SY01_Synergy LDS27



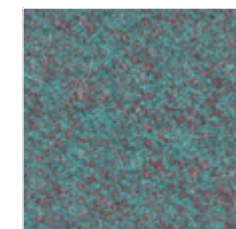
SY05_Synergy LDS17



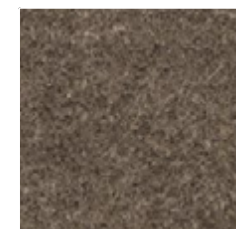
SY04_Synergy LDS35



SY07_Synergy LDS58



SY09_Synergy LDS56



SY35_Synergy LDS33



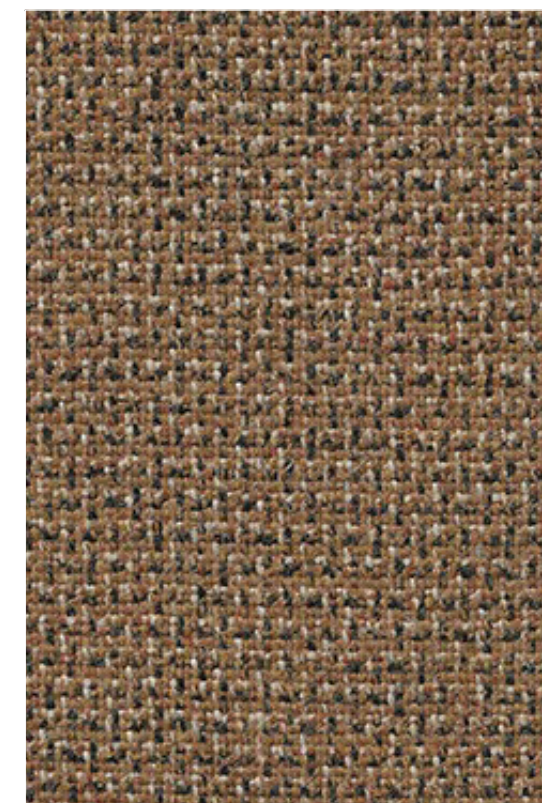
SY10_Synergy LDS83



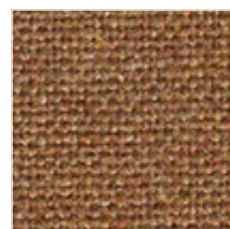
SY13_Synergy LDS84



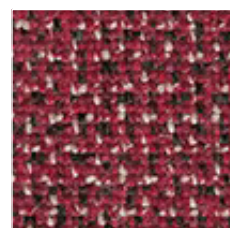
SY32_Synergy LDS64



MW10_Main Line Twist MLT10



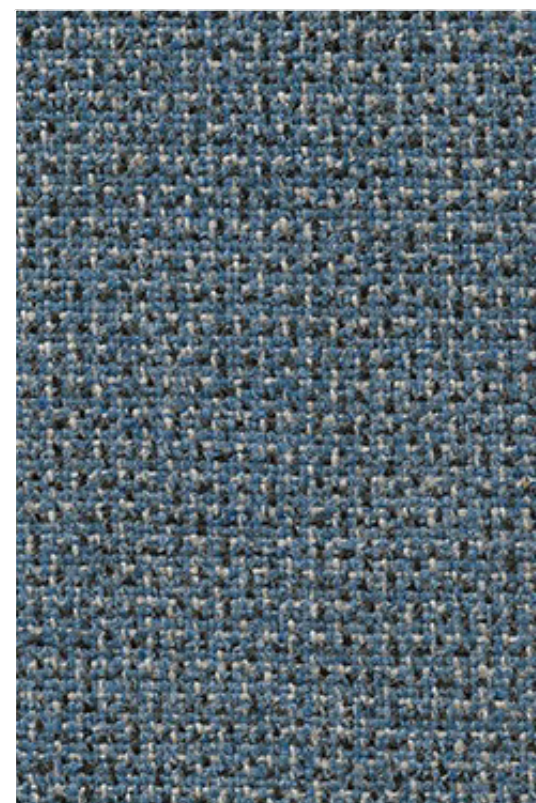
MF59_Main Line Flax MLF59



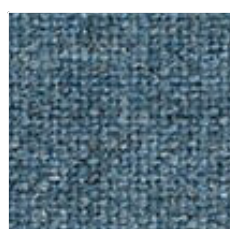
MW03_Main Line Twist MLT03



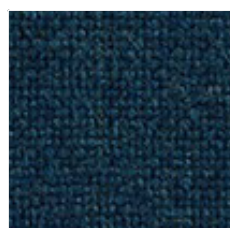
MF06_Main Line Flax MLF06



MW04_Main Line Twist MLT04



MF51_Main Line Flax MLF51

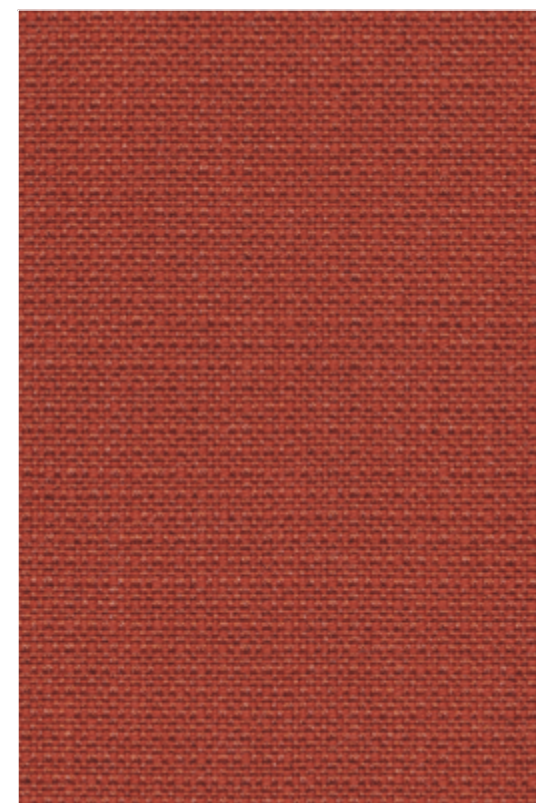


MF50_Main Line Flax MLF50

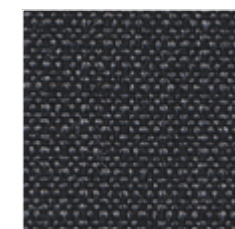
CS
Gabriel, Crisp

Cat. 5

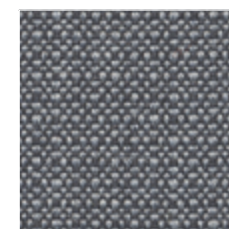
Designer Mette Krebs Petersen
93% W of New Zealand, 7% PA
200.000 Martindale



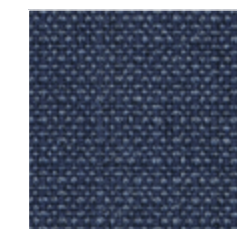
CS42_Crisp 04302



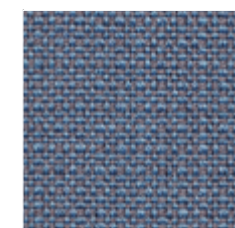
CS38_Crisp 04013



CS40_Crisp 04022



CS43_Crisp 04741



CS04_Crisp 04604



CS36_04761



CS05_Crisp 04115



CS07_Crisp 04032



CS44_Crisp 04211

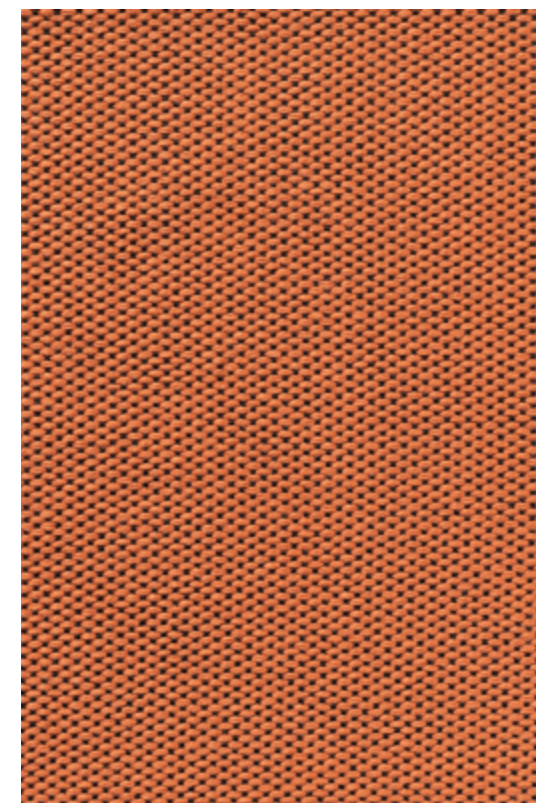


CS45_Crisp 04701

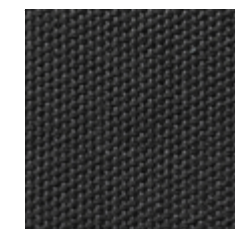
WI
Vescom, Wilson

Cat. 5

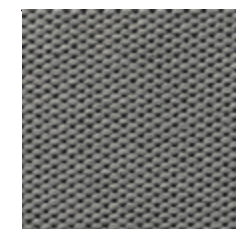
100% post-consumer recycled PL
80.000 Martindale



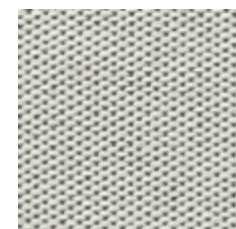
WI01_Wilson 7067.03



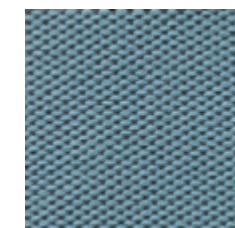
WI11_Wilson 7067.10



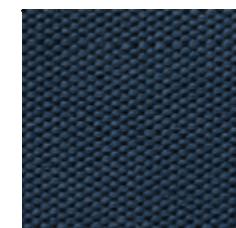
WI10_Wilson 7067.07



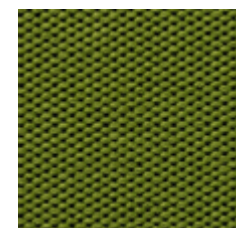
WI07_Wilson 7067.06



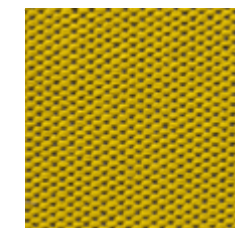
WI08_Wilson 7067.14



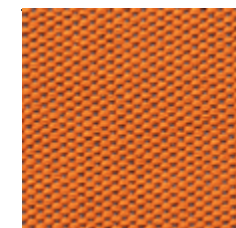
WI09_Wilson 7067.13



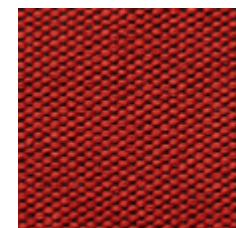
WI04_Wilson 7067.20



WI03_Wilson 7067.21



WI05_Wilson 7067.04



WI06_Wilson 7067.01